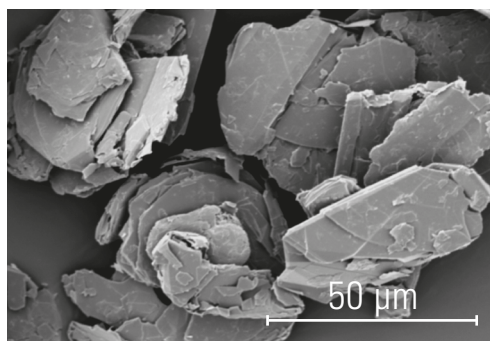




Polymers

# SPECIALTY GRAPHITES & CARBONS FOR POLYMERS

## TIMREX® Graphite



## TIMREX® Dispersion

## TIMREX® Coke

- Thermal conductivity
- Electrical conductivity
- Self-lubrication
- Improved resistance to creep
- Special colouration effect
- Gas barrier properties
- Thermal insulation

### FINAL APPLICATIONS INCLUDE:

- **Thermal management:** heat-exchangers, heat sinks, geothermal pipes, LED light sockets, insulation foam
- **Electrical conductivity:** conductive coatings of storage tanks, conductive textiles, primers for electrostatic painting
- **Antistatic:** primers for antistatic flooring, antistatic SMC/BMC composites, conveyor belts
- **Self-lubrication:** water-meters, windscreen wiper blades coatings
- **Other:** Gaskets and seals, bipolar plates, gas barrier membranes, corrosion protection, silver effect pigments and many more



Courtesy of Universität Erlangen-Nürnberg

[www.imerys-graphite-and-carbon.com](http://www.imerys-graphite-and-carbon.com)

## A STRONG COMPANY

Imerys Graphite & Carbon, member of the Imerys Group, is the reference for innovative capability in the field of carbon-powder-based solutions: natural graphite and synthetic graphite powders, conductive carbon blacks, as well as silicon-carbon composites and water dispersions.

High standards in terms employee health and safety, social behaviour and environmental responsibility are core values of the company, which is capturing opportunities by developing new products and applications, investing in assets & people, and growing its commercial presence worldwide.



**500**

Employees  
Worldwide



**40**

Countries



**5**

Industrial Sites



**2**

S&T  
Centers



**Since  
1908**

### FINANCIAL STRENGTH



Profitable company, part of Imerys, the world leader in mineral-based specialty solutions for industry, listed on the Paris stock exchange

### IMERYS GROUP 2017

WORKFORCE	18,300
REVENUE	4.6 Bn
OPERATING MARGIN	14.1 %

### RELIABLE PARTNER



#### INNOVATION STRATEGY

■ Focused on the market and the Customer's needs

#### SECURITY OF SUPPLY

■ 5 Industrial sites

#### OUR DRIVING FORCE

■ Customer Service

### RESPONSIBLE GROWTH



#### COMMITMENT TO

■ Green Technology and Sustainable Development

#### REDUCTION OF

■ CO<sub>2</sub> Footprint

#### ENGAGEMENT WITH

■ Local Communities

