

The Permissive Paths & Clay Trails Code

Imerys would like all those using their permissive paths and the Clay Trails to have a pleasant, enjoyable and above all SAFE experience.

Whatever your activity, please follow these simple guidelines and you will help yourself, other users and local wildlife.

- Check the weather before setting out and don't be afraid to turn back
- Follow signs and pay particular attention to any access restrictions
- Leave gates as you find them
- Litter can be dangerous to wildlife, please take all rubbish home with you

Dog Walkers

Please act responsibly and clear up after your dog.

Cyclists

Please be particularly careful at entrances, junctions and bends. Be prepared to slow down or stop if necessary.

Horse Riders

Ride at no more than a trot to protect the trail surface. Please take extra care when approaching and passing other trail users.

Car Drivers

Please use the permissive path car parks, where provided.

MOTORCYCLES ARE NOT PERMITTED ON ANY OF THE TRAILS



China clay in Cornwall was first discovered in 1746 at Tregonning Hill, near Helston, by Plymouth chemist, William Cookworthy.

Two years later, Cookworthy discovered extensive china clay deposits in the St Austell area.

Imerys is a world leader in mineral based speciality solutions for industry. The Company has more than 240 industrial facilities operating in over 50 countries around the world and mines 30 different minerals.

In Mid-Cornwall, Imerys mines and processes china clay for markets that include paper fillers, ceramics (sanitaryware and tableware) and specialities, which include paints, rubber, plastics, cosmetics, pharmaceuticals and animal feed.

Approximately 85% of the 750,000 tonnes of china clay mined and processed annually in Mid-Cornwall is exported.

Imerys Permissive Paths & The Clay Trails

A Guide To Walking, Cycling and Horse Riding Through Clay Country



Discover Hidden Secrets of The Mid Cornwall China Clay Area



Imerys Minerals Ltd
 Par Moor Centre
 Par Moor Road
 Par
 PL24 2SQ

 Tel: 01726 818000
 Email: permissivepaths@imerys.com
 Web: <http://www.imerys.com>

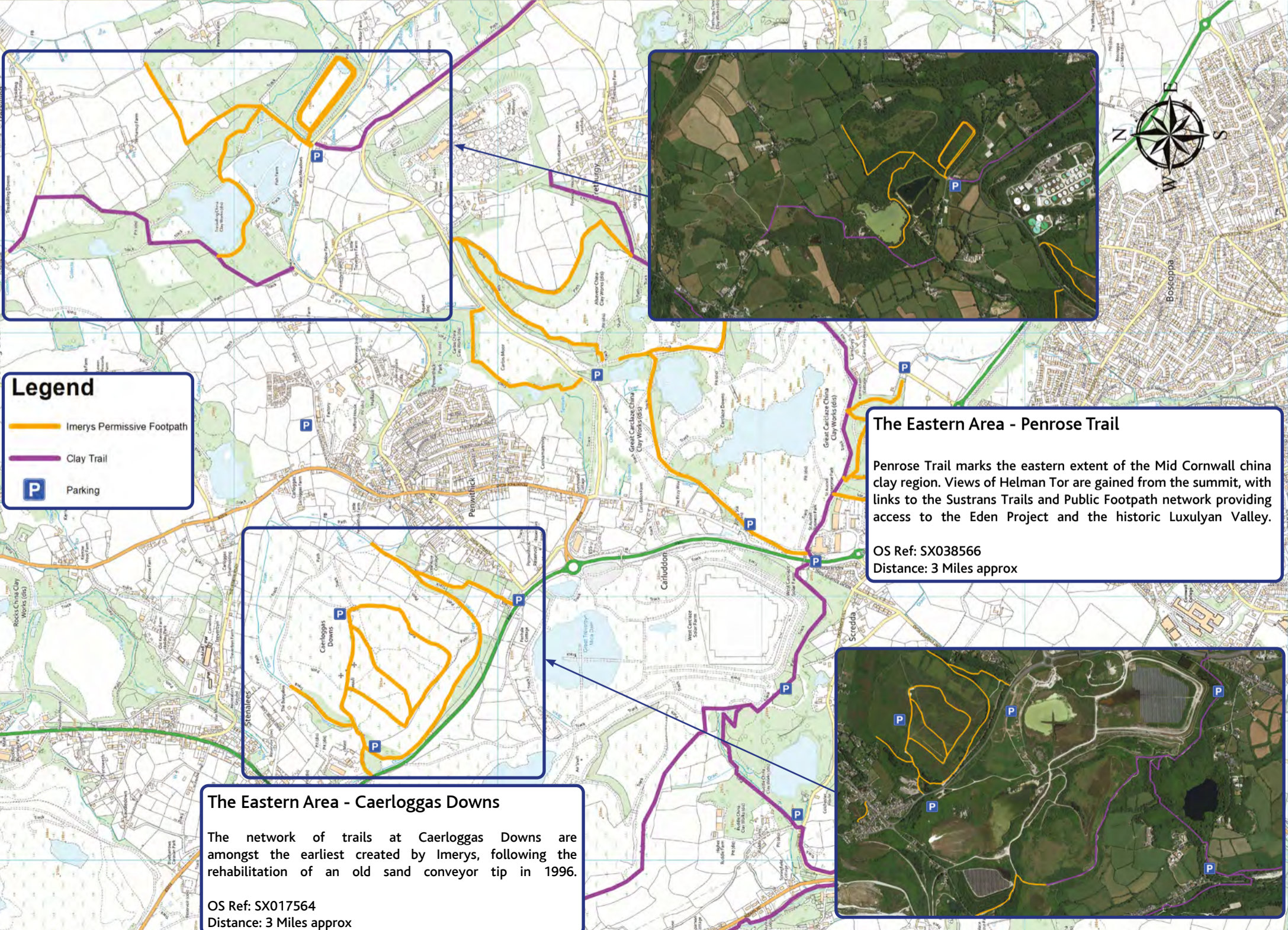


Wheal Martyn Museum
 QR Code



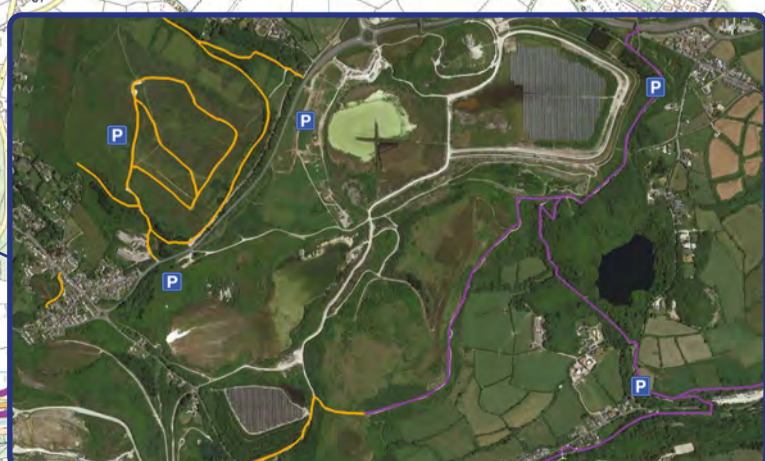
St Austell Bay
 QR Code

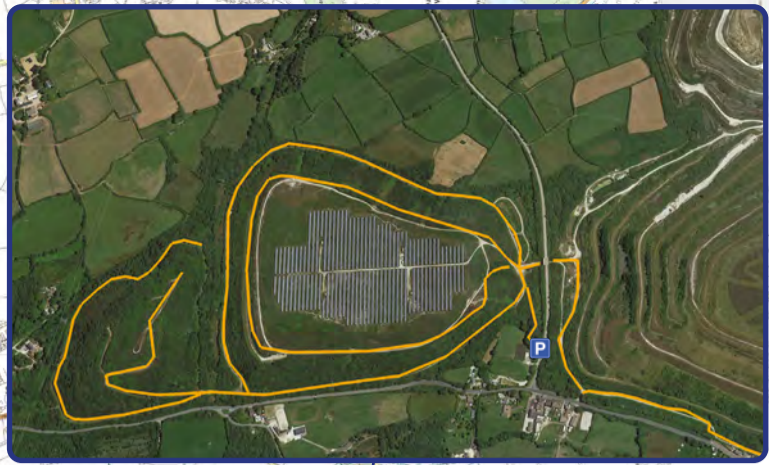
© Imerys Minerals Limited 2022



The Eastern Area - Penrose Trail
 Penrose Trail marks the eastern extent of the Mid Cornwall china clay region. Views of Helman Tor are gained from the summit, with links to the Sustrans Trails and Public Footpath network providing access to the Eden Project and the historic Luxulyan Valley.
 OS Ref: SX038566
 Distance: 3 Miles approx

The Eastern Area - Caerloggas Downs
 The network of trails at Caerloggas Downs are amongst the earliest created by Imerys, following the rehabilitation of an old sand conveyor tip in 1996.
 OS Ref: SX017564
 Distance: 3 Miles approx

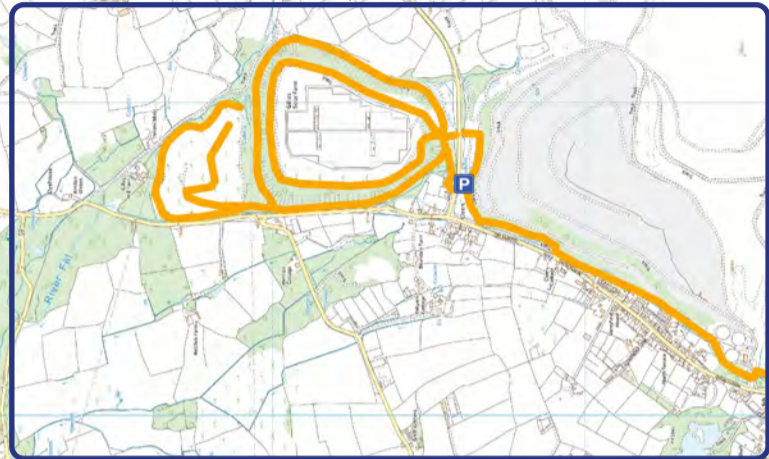




The Central Area - Blackpool Trail

Blackpool Trail lies at the heart of the mid Cornwall china clay area. Stop at the viewing point, where you will find a direction marker that will help identify some famous landmarks.

OS Ref: SW974533, SW970540, SW971547
 Distance: 1.5 Miles approx
 Parking: Hornick Hill and High Street



Legend

- Imerys Permissive Footpath
- P Parking



The Central Area - Gilleys Trail

Gilleys is a restored mica dam, which houses a 5mW solar pv installation. The trail links to public footpaths, which provide access to the Goss Moor, a 480 hectare National Nature Reserve.

OS Ref: SW978584
 Distance: 2.5 Miles approx



The Western Area - Pines Tip

Pines Tip lies on the extreme western edge of the Mid Cornwall china clay area. The trail follows the base of the tip, before meandering to the summit, from where commanding views to the west of the county can be gained.

OS Ref: SW917570
 Distance: 2 Miles approx



Legend

- Imerys Permissive Footpath
- P Parking

